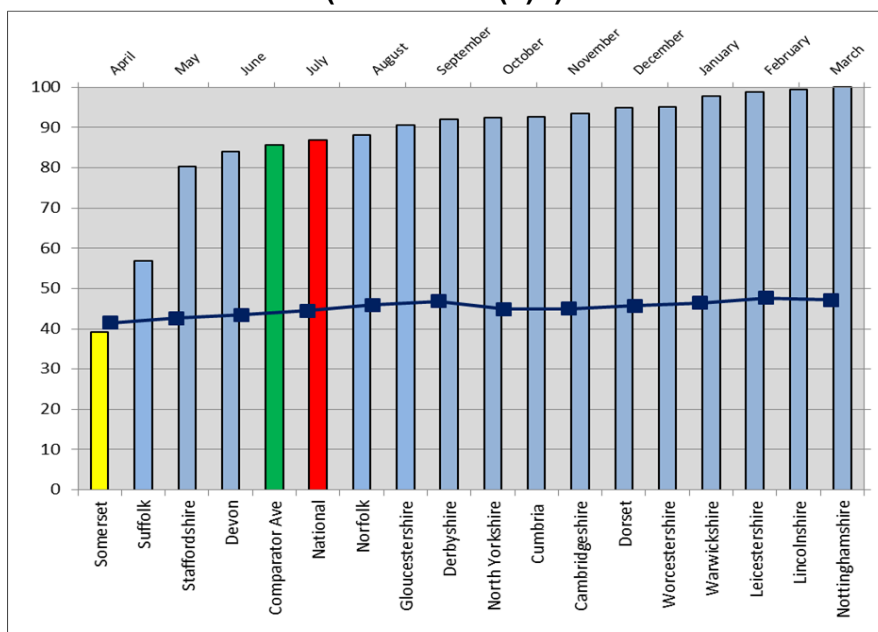


## Scrutiny Report – Adult Social Care Performance: Appendix A

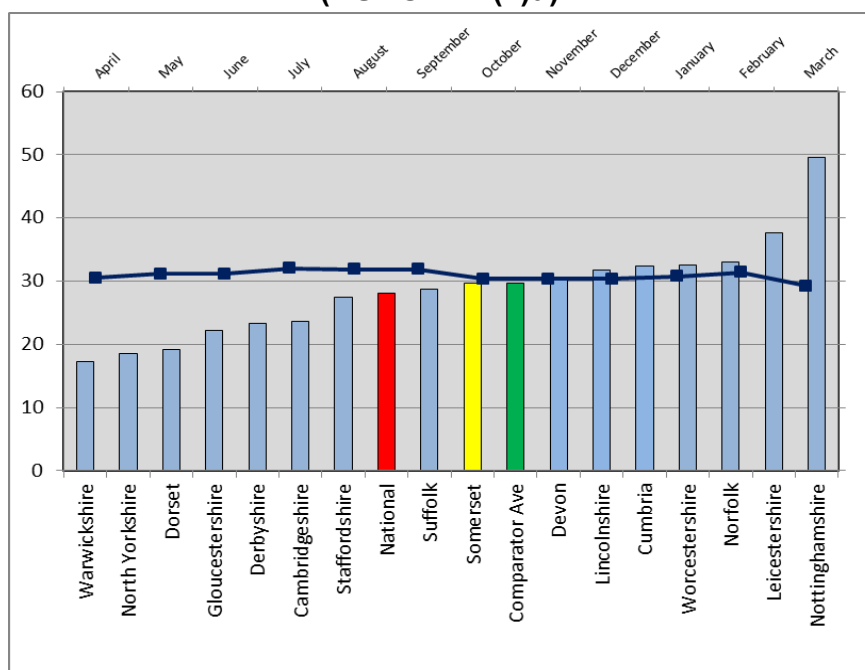
Tables A to F below show the 2015/16 outturn performance measures from ASCOF for both Somerset and its family group (bars) along with the draft outturn performance for Somerset for 2016/17 (these figures are still to be ratified as part of our statutory end of year returns).

### A. Proportion of people using social care who receive self-directed support (ASCOF 1C(1)a):



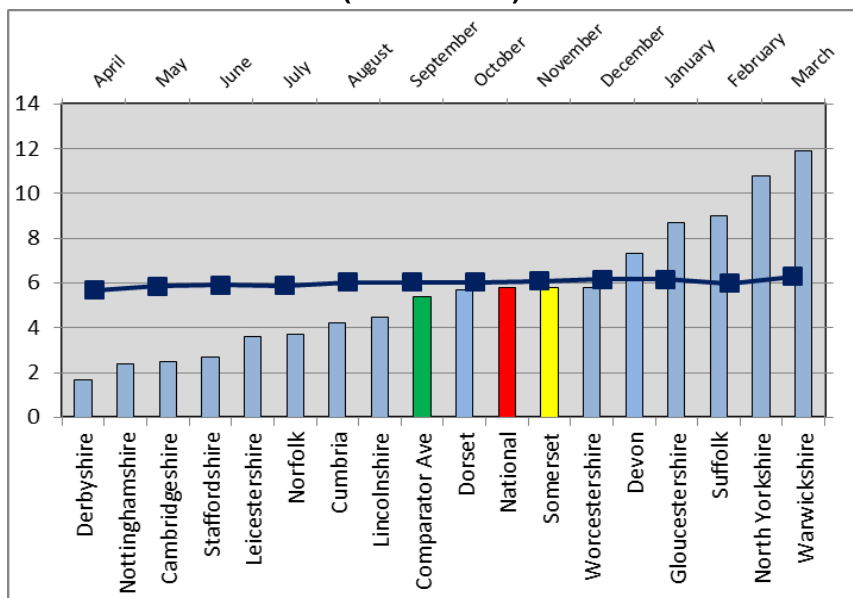
**Commentary:** Higher is better. Somerset's performance against this measure is poor and is significantly below both the national and comparator group average.

### B. Proportion of people using social care who receive direct payments (ASCOF 1C(2)a):



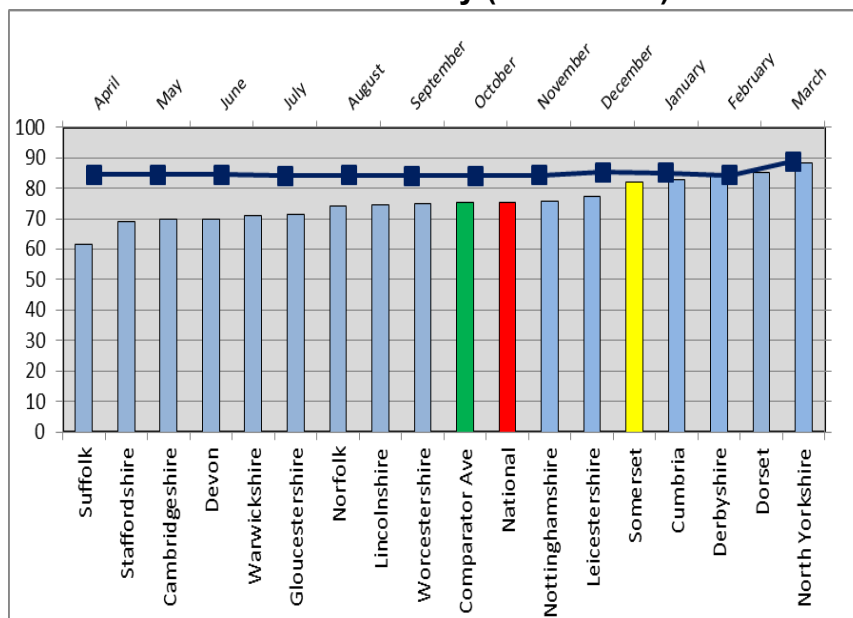
**Commentary:** Higher is better. Somerset's performance is good. It is above the national average and in line with the comparator group average. Current year (2016/17) performance is in line with performance in 2015/16.

**C. Proportion of adults with learning disabilities in paid employment (ASCOF 1E):**



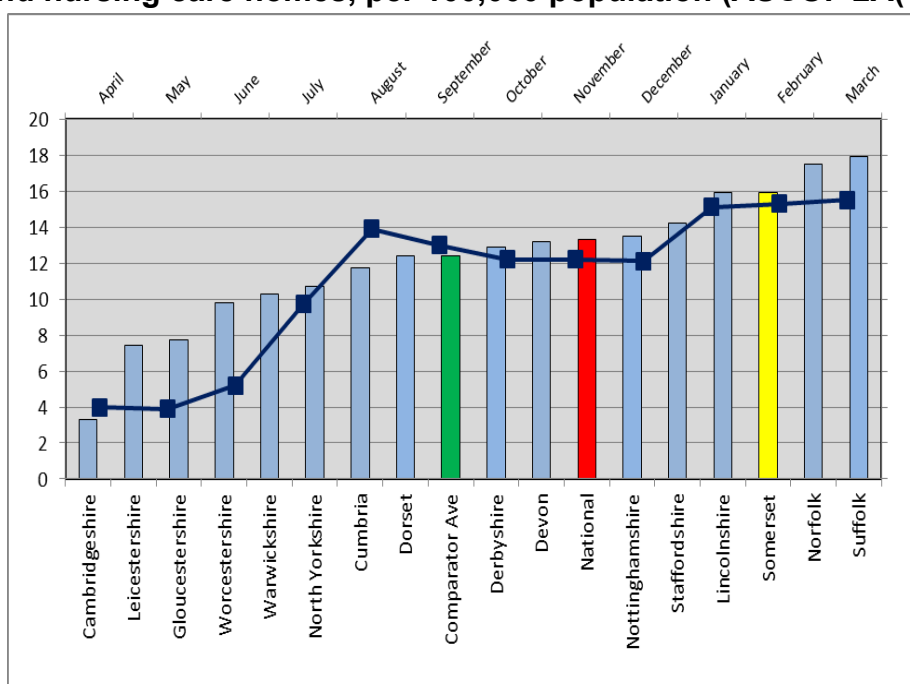
**Commentary:** Higher is better. Somerset's performance is slightly above both the national average and the average for the comparator group.

**D. Proportion of adults with learning disabilities who live in their own home or with their family (ASCOF 1G):**



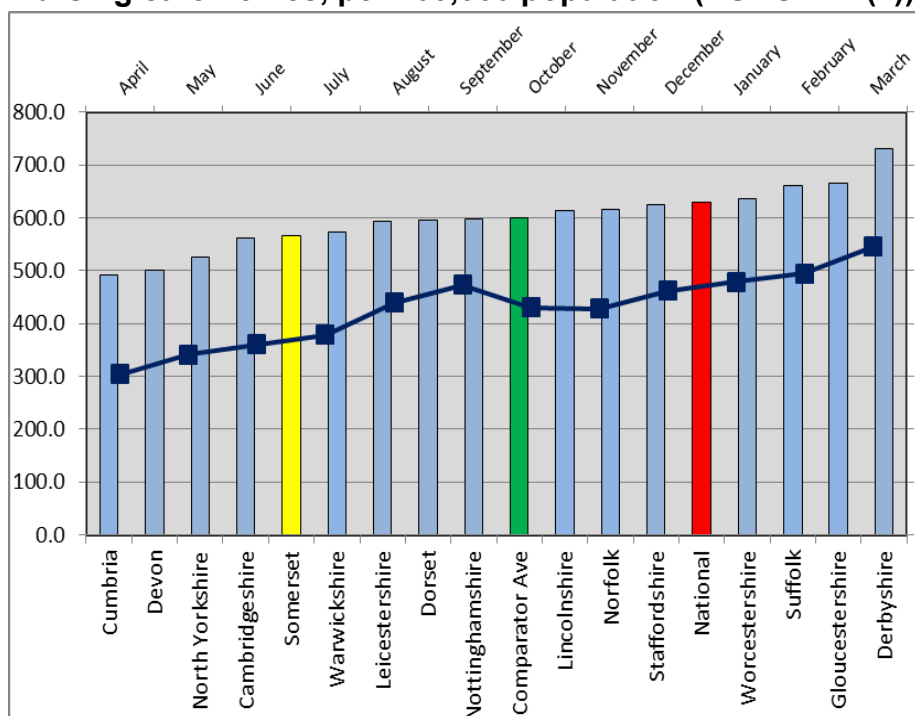
**Commentary:** Higher is better. Somerset's performance is good and is above both the national and comparator group averages.

**E. Permanent admissions of younger adults (aged 18 to 64) to residential and nursing care homes, per 100,000 population (ASCOF 2A(1)):**



**Commentary:** Lower is better. Somerset's performance in 2015/16 was poor. Placement numbers were above the national and comparator group averages and Somerset was one of the highest placing councils in the comparator group. Performance in 2016/17 was in line with 2015/16 performance.

**F. Permanent admissions of older people (aged 65+) to residential and nursing care homes, per 100,000 population (ASCOF 2A(2)):**



**Commentary:** Lower is better. Somerset's performance in 2015/16 was below the national and comparator group averages. Performance in 2016/17 shows a further improvement and is slightly below the 2015/16.